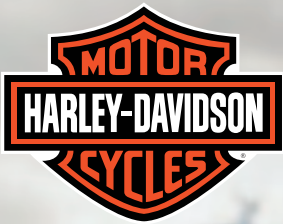


2019 HARLEY-DAVIDSON® MOTORCYCLES



2019 HARLEY-DAVIDSON® MOTORCYCLES



THE POWER OF PURE FREEDOM

We care about you. When riding your Harley-Davidson® motorcycle, be sure to ride safely, respectfully, and within the limits of the law and your abilities. Always wear an approved helmet, proper eyewear and protective clothing, and insist your passenger does too. Never ride while under the influence of alcohol or drugs. Know your Harley® motorcycle, and read and understand your owner's manual from cover to cover. Sign up for a Harley-Davidson® Riding Academy course (call 1-800-446-9227 for a course near you). Protect your privilege to ride by joining the American Motorcyclist Association. Visit americanmotorcyclist.com for more information. Visit our website at harley-davidson.com to find a nearby dealer. Harley-Davidson, H-D, Harley, the Bar & Shield Logo, Harley Owners Group and H.O.G. are among the trademarks of H-D U.S.A., LLC. Third-party trademarks are the property of their respective owners. ©2018 H-D or its Affiliates.

Part Number 94500277



**GO FARTHER.
SMILE BIGGER.
BREATHE DEEPER.
ROAM WIDER.
MAKE YOUR HEART
BEAT LOUDER.
LIVE FREE[ER].**

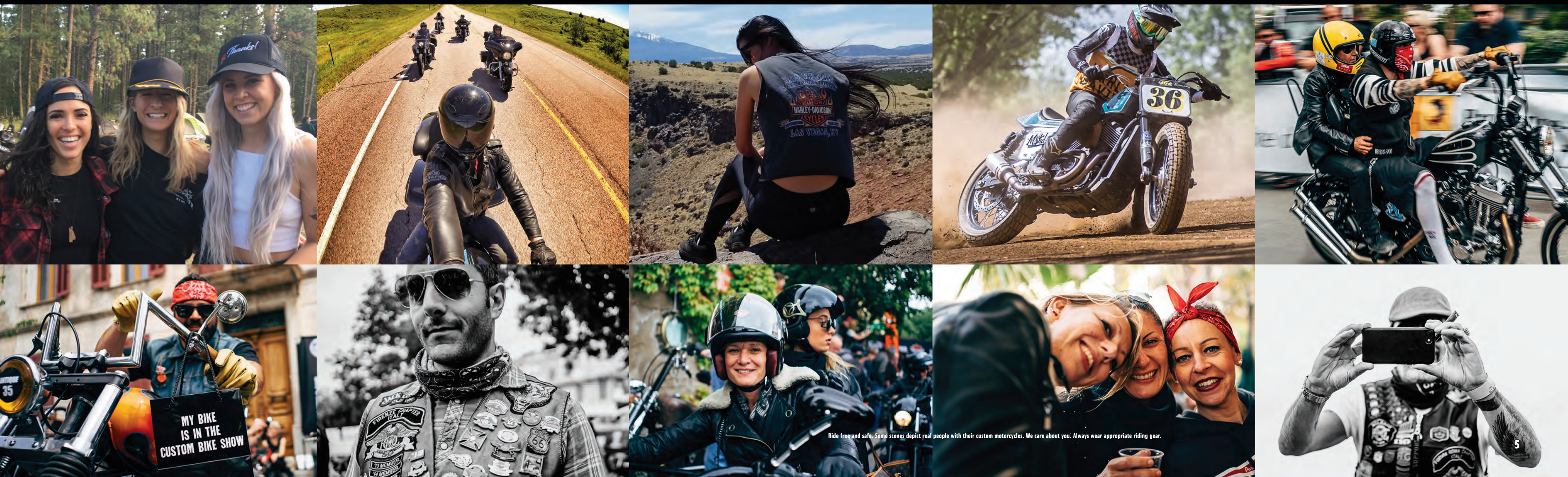
IN THE SADDLE, YOUR LUNGS FILL UP WITH MORE AIR. SIGHTS AND SOUNDS FILL THE SENSES. AND RESPONSIBILITIES BLOW OFF YOUR BACK LIKE DANDELION SEEDS IN THE WIND. FEW EXPERIENCES CAN BE DESCRIBED AS TRULY LIFE CHANGING. BUT A RIDE ON A HARLEY-DAVIDSON® MOTORCYCLE IS ONE OF THEM. IT CAN MAKE ANY WEEKEND EPIC. IT CAN TURN A DAILY COMMUTE INTO AN ADVENTURE. A HARLEY-DAVIDSON BLOWS THINGS WIDE OPEN. PURE FREEDOM. AS BIG AND REAL AS IT GETS.





A DAY IN THE LIFE OF HARLEY-DAVIDSON.

POST YOUR STORY AT #FINDYOURFREEDOM



Ride free and safe. Some scenes depict real people with their custom motorcycles. We care about you. Always wear appropriate riding gear.

FREEDOM FOR ALL



This is about chasing your own dream and riding your own way. Our job is to build the motorcycles that let you do it. For 2019, we're building more kinds of motorcycles for more kinds of riders than ever in our history — from machines built for flicking

through city traffic to machines built to take you as far as the highway leads. Grab a cup of coffee, and take a few moments to learn about the Harley-Davidson Street[®], Sportster[®], Softail[®] and Touring models. Find the one that grabs your eye and fits your style. All are welcome to ride.

Handlebar height is regulated in many locations. Check local laws to ensure your motorcycle meets applicable regulations.

SOFTAIL®



THE FXDR™ 114 MODEL COMBINES THE POWER OF THE MILWAUKEE-EIGHT® 114 ENGINE WITH THE LATEST SOFTAIL® FRAME AND A CAST ALUMINUM SWING ARM REAR SUSPENSION, BREAKING ALL-NEW GROUND FOR 2019.



ONE LOOK AT THE FXDR™ 114 IS ALL IT TAKES TO SEE HOW FAR THE SOFTAIL® FAMILY HAS COME. IT'S THE LATEST IN A NEW REVOLUTION OF CUSTOM MOTORCYCLES WE LAUNCHED LAST YEAR. WITH EVERY SOFTAIL®, YOU GET A LIGHTER FRAME, RESPONSIVE NEW SUSPENSION AND THE POWER OF THE MILWAUKEE-EIGHT® V-TWIN ENGINE. IN KEEPING WITH THE CUSTOM TRADITION, EACH MODEL HAS ITS OWN ATTITUDE AND STYLE, RANGING FROM THE BLACKED-OUT NOSTALGIA OF THE HERITAGE CLASSIC TO THE FUTURISTIC EDGE OF THE FAT BOB® AND FXDR™ 114 MODELS. FIND THE ONE THAT FITS YOUR STYLE. YOU'RE IN FOR ONE HELL OF A RIDE.



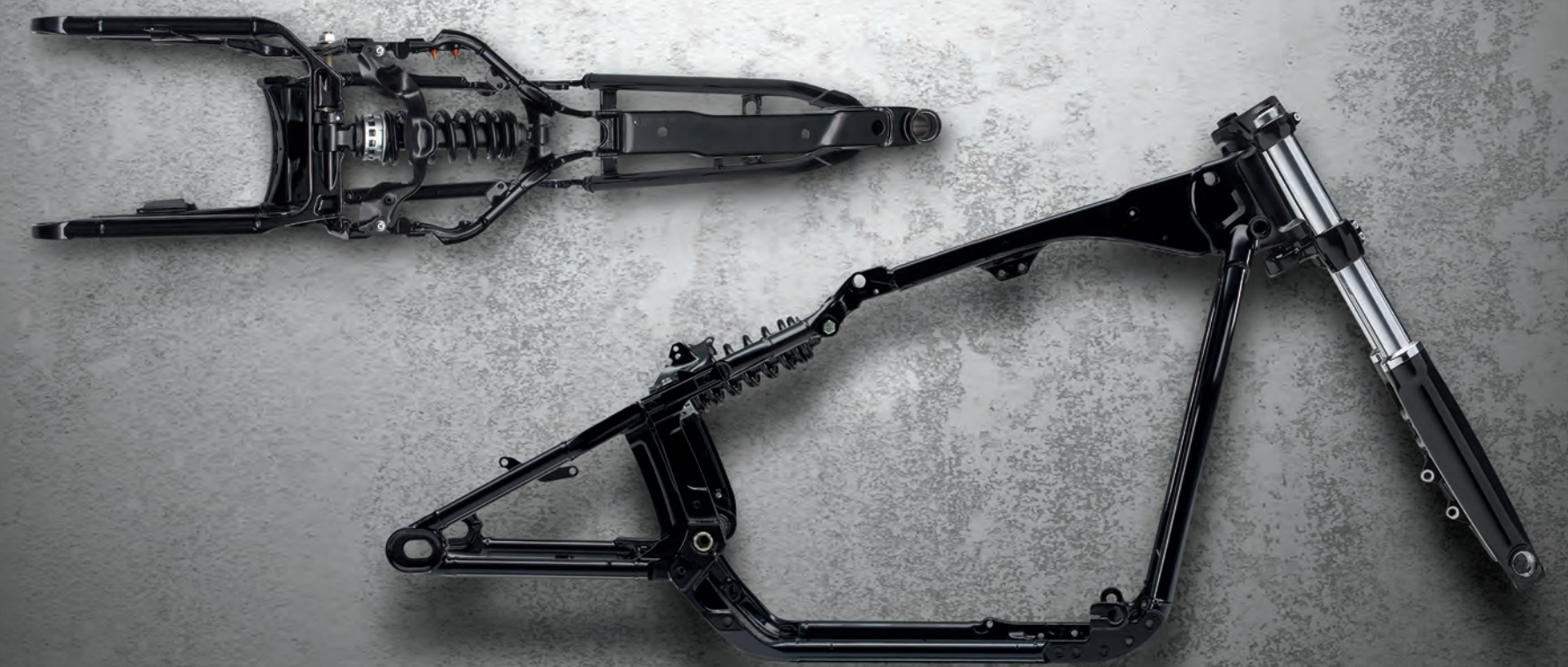


**WITH A SOFTAIL® MOTORCYCLE, YOU GET PLENTY OF POWER.
AND THE AGILITY TO PUT IT TO GOOD USE.**

SINCE WE INTRODUCED THE REINVENTED SOFTAIL® FRAME AND SUSPENSION, THE AGILITY AND HANDLING OF THESE MOTORCYCLES HAVE BLOWN PEOPLE AWAY. THE FRAME RETAINS THE CLASSIC SOFTAIL® LINES, BUT IT'S LIGHTER AND STIFFER THAN THE PREVIOUS FRAME. THAT TRANSLATES TO MORE RESPONSIVE HANDLING. THE SUSPENSION ALSO TOOK A LEAP FORWARD. IT GIVES YOU MONO SHOCK TECHNOLOGY IN THE REAR AND A RACING-STYLE FRONT SUSPENSION THAT FEATURES SHOWA® SDBV® TECHNOLOGY, PROVIDING YOU WITH 130MM OF TRAVEL AND A SMOOTH RIDE. FEEL IT FOR YOURSELF.



AT THE HEART OF EVERY SOFTAIL® MODEL, YOU'LL FIND THE MILWAUKEE-EIGHT® V-TWIN ENGINE. IT'S THE MOST SOUL-SATISFYING, SMOOTHEST-RUNNING, BEAUTIFULLY SCULPTED ENGINE IN THE HISTORY OF SOFTAIL® MOTORCYCLES. IT GIVES YOU LOADS OF TORQUE FOR BLASTING OFF FROM STOPLIGHTS, HITTING ENTRANCE RAMP AND ROLLING ON THE PASSING POWER. THE SOUND IS PURE — THE DEEP, RICH EXHAUST NOTE KNOWN THE WORLD OVER. COUNTER BALANCERS SMOOTH OUT THE RIDE BUT GIVE YOU ENOUGH RUMBLE TO LET YOU KNOW YOU'RE RIDING H-D. IT WILL PUT A BIG GRIN ON YOUR FACE.





ALL NEW FXDR™ 114 / Meet the all-new FXDR™ 114. The air intake and exhaust come straight out of drag racing. The Milwaukee-Eight® 114 V-Twin engine is the most powerful engine you can get in a Softail® motorcycle. There's an all-new lightweight cast aluminum swing arm. Bump-devouring racing-style front fork. Mono shock rear suspension. It's all dialed in for quick response and agility. The FXDR™ 114 is built to move you in ways no Harley-Davidson® motorcycle has ever moved you before. Fast on the straights. Quick in the turns. Take a ride. It will blow you away.



SPORT GLIDE® / Devour endless miles of highway. Lean hard through twisting roads. Hit the night spots. All kinds of adventures are yours for the taking on the Sport Glide™ model. You get the responsive ride of the redesigned Softail® frame and suspension. The power of the Milwaukee-Eight® 107 V-Twin engine. A mini batwing-inspired fairing and saddlebags that both detach in seconds. And a black-and-chrome custom look that will turn heads wherever you ride. If you're going to roam, roam hard.



HERITAGE CLASSIC / The refined gloss black finishes, modern edge and reinvigorated ride of the Heritage model take nostalgia ripping into a new place. It starts with the performance of the Milwaukee-Eight® 107 or 114 engine and the reinvented Softail® frame and suspension. The ride will put a big smile on your face. On top of that, you get a look that drips with gangster-era style. And practical features like a windshield and hard saddlebags for light touring. Tradition is good, but it doesn't mean sitting still. Available in 107 and 114 engine displacements.



BREAKOUT® / The Breakout® model takes long, lean muscle to the modern edge. The Milwaukee-Eight® 107 or 114 engine stands out like a flexing bicep. It sends massive torque to the 240mm rear tire. There are custom details from fender to fender. And a reinvented Softail® frame and suspension that give you more agility than you ever imagined from a bike carrying this much dragster attitude. Reach for the drag bars and unleash it on the street. It'll make an impact. Available in 107 and 114 engine displacements.



LOW RIDER® / We can all thank the chopper era for the Low Rider® model. This is rugged individualism turned to metal. The rake on its front end, dual tank gauges and '70s-inspired graphics leave no doubt about that. Only now you get Milwaukee-Eight® power and a frame and suspension that let you carve corners at a pace they never dreamed of back in the day. Not to mention a few modern touches like cast wheels and LED forward lighting. Ride hard or stay home.



DELUXE / If you like the classic showstopper, you owe yourself a ride on the Deluxe model. This one is pure eye candy with the ride of a seriously modern machine. Underneath all the chrome and polish, you get Milwaukee-Eight® engine power and an easy-handling Softail® frame and suspension. It's lighter than you ever imagined in a bike carrying this much flash. And you've got a comfortable seat that lets you keep going from day into night. Show meets go.



SOFTAIL SLIM® / The stripped-down, souped-up, post-WWII-era look of the bobber is running stronger than ever in the Softail Slim® model. You get the classic look of spoked wheels, chopped fenders and floorboards. And a ride straight out of right now. It's 35 pounds lighter with greater lean angle than Slim models from just a couple years ago. And you get the power and soul-satisfying sound of the Milwaukee-Eight® 107 V-Twin engine to take you into the future. Fast.



FAT BOY® / The name may be Fat Boy®, but the look is all muscle. This is the icon, riding on a 240mm rear tire, 160mm front tire and solid disc wheels. You get satin chrome finishes and signature LED lighting. This version is 30 pounds lighter than the previous-generation Fat Boy® models, and it's slinging torque from a Milwaukee-Eight® 107 or 114 engine. You'll notice the difference the instant you crack the throttle. Sometimes a bike comes along that changes the landscape. The Fat Boy® is one of them.

Available in 107 and 114 engine displacements.



FAT BOB® / The Fat Bob® motorcycle is all Harley-Davidson, but at the same time, it's unlike any Harley® motorcycle that ever existed before. From the modern, aggressive look of its 2-1-2 upswept exhaust and asphalt-devouring fat tires to the massive torque of the Milwaukee-Eight® engine to the ride of the Softail® frame, inverted front forks and easily adjustable rear suspension, it's built to shake up the status quo. This is for the rider who wants to break new ground at a high rate of speed.

Available in 107 and 114 engine displacements.

Handlebar height is regulated in many locations. Check local laws to ensure your motorcycle meets applicable regulations.



STREET BOB® / The Street Bob® model gives you the two-fists-in-the-wind riding experience stripped down to the bare essence. Blacked-out surfaces, spoked wheels, hidden digital instrumentation and chopped fenders. The 107-cubic-inch Milwaukee-Eight® engine gives you all the power you need to put the world in your mirrors in a hurry. It's all you need and nothing you don't. And it comes at a price that put the black mini-apes easily within reach.

BLENDING IN IS NOT AN OPTION.



Fat Bob®

GENUINE MOTOR PARTS AND ACCESSORIES FOR SOFTAIL® MODELS

THE SOFTAIL® PLATFORM IS BUILT ON THE IDEA OF INDIVIDUALITY. HARLEY-DAVIDSON® GENUINE MOTOR PARTS AND ACCESSORIES ARE BUILT TO HELP YOU CRANK THAT IDEA ALL THE WAY UP TO THE REDLINE. WE CAN HELP YOU ACHIEVE A LOOK THAT WILL STAND ALL THE WAY OUT FROM THE CROWD. PEAK PERFORMANCE THAT MAINTAINS THE PURE SOUND OF YOUR ENGINE (AND YOUR WARRANTY*). AND A BIKE THAT FITS YOUR BODY LIKE A MOTORCYCLE GLOVE. YOUR DEALER IS THE PLACE TO START. WHERE IT GOES FROM THERE IS UP TO YOU.

*Genuine H-D® Parts and Accessories must be installed by an authorized dealer to maintain warranty. Handlebar height is regulated in many locations. Check local laws to ensure your motorcycle meets applicable regulations.



Street Bob®



Deluxe



FXDR™ 114



HOW TO START A ONE-MACHINE REVOLUTION



YOU HAVE FRIENDS IN THE CUSTOM BIKE-BUILDING BUSINESS: THE PEOPLE AT YOUR LOCAL HARLEY-DAVIDSON® DEALER. THEY EAT, BREATHE AND SLEEP HARLEY-DAVIDSON. THEY HAVE THE BEST H-D® TRAINING IN THE WORLD. THEY HAVE GENUINE HARLEY-DAVIDSON® PARTS. THEY CAN HELP YOU DREAM, AND THEY CAN GET THE JOB DONE. SO YOU'RE ALREADY ON THE INSIDE IF YOU WANT TO BUILD A BIKE THAT MAKES WAVES AND RUFFLES FEATHERS WHEREVER IT GOES. ALL IT TAKES TO GET STARTED IS A CONVERSATION. LET THE RIDE BEGIN.



HARLEY-DAVIDSON STREET® 750/500 / Like their close cousins that are built for the track, the Harley-Davidson Street® 750 and Street® 500 models are born to run hard. You get the power of the Revolution X™ engine and the confidence and quick handling of a nimble chassis, dialed-in suspension and optional ABS brakes. On the Street™ 750, you get a premium tank medallion and two-tone paint option to complement the silver engine fins and machined highlights on the wheel. Fire one up and start shredding.



STREET ROD® / High-output 750cc Revolution X™ engine that redlines at 9000 rpm. Drag-style bars with bar-end mirrors. 43mm inverted front forks and racing-style piggyback reservoir rear shocks. Up to 40 degrees of cornering, traffic-weaving lean angle. The Street Rod® model dials it all up to the modern edge. If you like the feeling of a little adrenaline surging through your soul, get in the saddle and give the throttle a twist. It will turn the streets of your city into a thrill ride.

SPORTSTER®



SHOWN WITH HARLEY-DAVIDSON® GENUINE MOTOR PARTS AND ACCESSORIES.



THE SPORTSTER® MOTORCYCLE HAS BEEN A FEATURE ON THE MOTORCYCLING LANDSCAPE SINCE IT FIRST HIT THE SCENE IN 1957. THIS IS THE MACHINE THAT'S DONE IT ALL. DRAG RACING, FLAT-TRACK RACING, LAND SPEED RECORDS AND EVERY KIND OF STREET RIDING OR CROSS-COUNTRY TREK RIDERS COULD DREAM UP. SIMPLE, RIGHTEOUS, BARE-KNUCKLE STYLE. LEGENDARY ENGINE. EASILY AFFORDABLE. INFINITELY CUSTOMIZABLE. UPDATED FOR THE MODERN ERA. TAKE IT WHEREVER YOU WANT TO GO.





IRON 883™ / You're looking at one of the original icons of Harley-Davidson® Dark Custom™ style. The Iron 883™ has been there since day one. Setting the standard for the raw, stripped-down, blacked-out look. Fine-tuned suspension. Tuck and roll seat. Black cast aluminum wheels with machined highlights. And fresh new graphics for 2019. Two wheels, handlebar, engine and a dark side. What else do you need?



IRON 1200™ / If you're looking for a clue on what the new Iron 1200™ is all about, look no further than the name. It all starts with the 1200cc Evolution® engine that gives you loads of famous Sportster® torque. It's got a throwback look that goes right to the roots of the Sportster® motorcycle, thanks to '70s-inspired tank graphics. You also get a low-slung Café Solo seat, mid-mount controls and mini-ape handlebars for an aggressive, two-fists-in-the-wind riding position. Take the power.



FORTY-EIGHT® / Sometimes something comes along that stops everybody in their tracks. The Forty-Eight® model is a prime example. Fat tires on a skinny bike with an iconic peanut tank that made its debut in 1948. Designed with signature bulldog stance and 1200cc of torque. In addition to the look, you get large 49mm front forks, an adjustable rear suspension, cast aluminum wheels with floating rotors, and powerful brakes for plenty of handling and comfort. Stand all the way out.



FORTY-EIGHT® SPECIAL / This is where decades of Sportster® motorcycle heritage meet the best of today. The Forty-Eight® Special model is vintage '70s-style freedom on wheels. Check out the throwback tank graphics and blacked-out Tallboy® handlebars. They leave no question about the era this machine brings rolling into the here and now. Underneath, you've got plenty of modern function. Legendary engine, rock-solid suspension and brakes. If you like the look, you'll love the ride.



ROADSTER™ / Adrenaline mixed with a shot of garage-built custom style is the calling card of the Roadster™ model. The adrenaline comes from a 1200cc V-Twin, 43mm inverted front forks, dual disc brakes, adjustable rear suspension, speedo with tach, mid-mount controls and lowered bars. The style? Chopped rear fender, side mount license plate, 19-inch front and 18-inch rear wheels, iconic tank, and new graphics. Give it a ride. It's a potent cocktail.



1200 CUSTOM / The 1200 Custom has been a fixture in the Sportster® line for decades. It's a statement of individuality on wheels. The 1200cc Evolution® engine features black rocker box covers, a black and chrome oval air cleaner cover, and a black and chrome timer cover. It's all set off by a chrome shorty dual exhaust and bold fast graphics with a racing stripe on the tank. And that's just the start. Because where it goes from there is up to you.



SUPERLOW® / Easy riding is where the SuperLow® model puts miles between itself and all the rest. It starts with the low seat and low center of gravity that gives it its name. It puts you close to the road and gives you a well-balanced stance for confidence in the saddle. The handling is easy, and you have the comfort to go all day. Just dial in the adjustable suspension, unleash the torque of the 883 Evolution® engine and let the miles roll by.

**YOUR PERSONALITY
BLOWN THROUGH A STACK
OF AMPLIFIERS.**



Iron 1200™

GENUINE MOTOR PARTS AND ACCESSORIES FOR SPORTSTER® MODELS

A HARLEY-DAVIDSON® SPORTSTER® IS A PLATFORM FOR CUSTOMIZATION THAT'S UNMATCHED IN MOTORCYCLING. ADD GENUINE MOTOR PARTS AND ACCESSORIES, AND YOU CAN BUILD A BIKE UNLIKE ANY OTHER ON THE ROAD. WE HAVE A WIDE SELECTION OF ACCESSORIES DESIGNED SPECIFICALLY FOR SPORTSTER® MODELS. WHEELS, PIPES, SEATS, HANDLEBARS, LIGHTS, CONTROLS AND PERFORMANCE. YOUR HARLEY-DAVIDSON® DEALER IS THE SOURCE. THEY'LL HELP YOU DREAM IT. AND BUILD IT.

Genuine H-D® Parts and Accessories must be installed by an authorized dealer to maintain warranty.



Roadster™



Forty-Eight® Special



Iron 883™

**FIND WHAT FEELS RIGHT,
AND ROLL WITH IT.**

SINCE 1912, WE'VE BEEN MAKING COOL APPAREL AND GEAR FOR RIDERS. WE KNOW WHAT WORKS. ON THE ROAD AND ON A T-SHIRT. WE BUILD THINGS WITH THE KIND OF QUALITY THAT CAN TURN A LEATHER JACKET INTO A FAMILY HEIRLOOM. FROM FUNCTIONAL GEAR LIKE RAIN SUITS AND HELMETS TO MECHANICS' WORK SHIRTS TO MODERN RIDING JACKETS TO APPAREL THAT LETS YOU ROLL WITH SOME HARLEY WHEN YOU'RE OFF YOUR BIKE, WE'VE GOT YOU COVERED. YOUR HARLEY-DAVIDSON® DEALER IS THE PLACE TO FIND IT. STOP IN AND SMELL THE LEATHER. SEE WHAT FEELS RIGHT TO YOU.

HARLEY-DAVIDSON
FXRG
COLLECTION

WHEN THE RIDE CALLS FOR HIGH-PERFORMANCE RIDING GEAR, LOOK NO FURTHER THAN THE FXRG® COLLECTION. 115 YEARS OF RIDING EXPERIENCE MEET UP WITH ROAD-PROVEN DESIGNS AND THE LATEST TECHNOLOGY TO MAKE THIS LINE OF GEAR THE ONE TO RELY ON. IT'S BUILT TO HELP YOU RIDE FARTHER AND BE MORE COMFORTABLE IN THE SADDLE AS CONDITIONS CHANGE. YOU'RE ONLY AS GOOD AS YOUR GEAR. GET THE GOOD STUFF.



GENUINE
MOTORCLOTHES
COLLECTION

THIS IS ICONIC HARLEY-DAVIDSON® RIDING GEAR AND APPAREL. CLASSIC, BOLD AND STRONG. RIDING JACKETS BUILT FROM THE MOST DURABLE MATERIALS TO KEEP YOU RIDING THROUGH IT ALL. TOUGH HARDWARE. EVERYTHING YOU NEED FROM HELMETS AND RAIN GEAR TO T-SHIRTS AND HATS. AND PLENTY OF BLACK AND ORANGE SO YOU CAN SHOW THE WORLD YOUR TRUE COLORS. THE PRIDE RUNS DEEP HERE.



1903
COLLECTION

THE 1903 COLLECTION WAS BUILT FROM OUR PASSION FOR TWO WHEELS THAT WAS BORN 115 YEARS AGO. VINTAGE-INSPIRED HARLEY-DAVIDSON® GRAPHICS THAT COME STRAIGHT OUT OF OUR HISTORY. HAND-STITCHED DETAILS. TOP-QUALITY MATERIALS. THE HERITAGE RUNS ALL THE WAY BACK TO OUR ROOTS, BUT THE FUNCTION AND STYLE ARE TIMELESS. THIS IS THE TRUE ORIGINAL, MADE TO BE WORN BY THE TRUE ORIGINAL.



**HARLEY-DAVIDSON®
GARAGE
COLLECTION**

THERE'S NOTHING COMPLICATED ABOUT THE GARAGE COLLECTION. STRIPPED DOWN, RUGGED AND RAW. THAT'S AS IT SHOULD BE, BECAUSE IT WAS INSPIRED BY WORKWEAR. AND WE'RE TALKING ABOUT THE KIND OF WORK THAT GETS DONE BY PEOPLE WHO HAVE A WRENCH IN THEIR HAND. WE'VE GOT EVERYTHING FROM LEATHER JACKETS AND BOOTS TO SHIRT JACKETS AND TRUCKER CAPS. IF YOU TAKE THE NO B.S. APPROACH, TRY SOME ON.

**H-D® MOTO
COLLECTION**

WE GAVE THE THROTTLE A MODERN TWIST WHEN WE SET OUT TO CREATE THE H-D® MOTO COLLECTION. THE DETAILS ARE SUBTLE. THE LINES ARE CLEAN. THEY'RE DESIGNED FOR MOBILITY AND RIDING COMFORT BUT MADE TO LOOK GOOD WHEN YOU'RE OFF THE ROAD. THEY'RE CUT TO FIT YOUR BODY WITH SLEEK LINES AND NOT A LOT OF EXTRA FABRIC TO FLAP IN THE WIND. THESE ARE THE NEXT CLASSICS FOR THOSE WHO LIKE WHAT'S NEXT.



Handlebar height is regulated in many locations. Check local laws to ensure your motorcycle meets applicable regulations.



WHAT'S THE POINT OF BEING FREE IF YOU'RE NOT HAVING FUN?



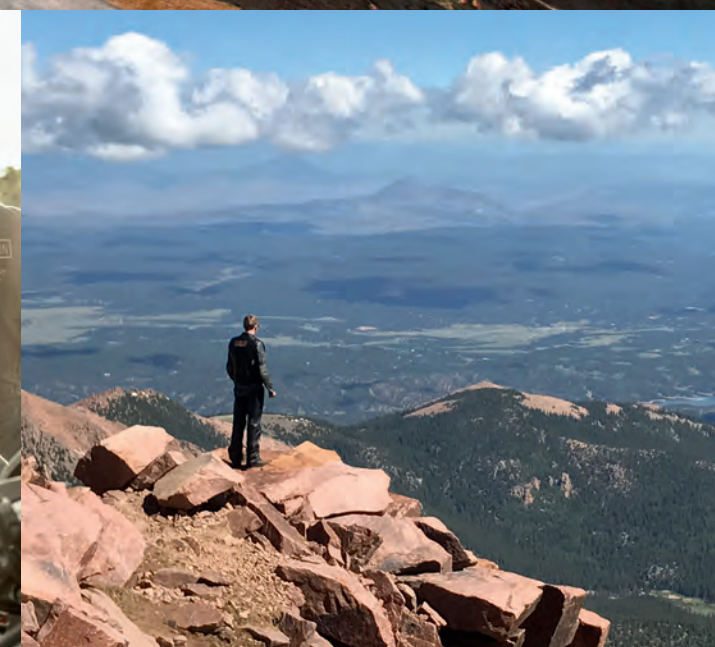
WELCOME TO THE WIDEST-RANGING, MOST FREEWHEELING RIDING CLUB ON THE PLANET. THE HARLEY OWNERS GROUP® RIDING CLUB IS YOUR CONNECTION TO PEOPLE AROUND THE WORLD WHO SHARE THE PASSION FOR HAVING FUN ON TWO WHEELS. YOU HAVE A STANDING INVITE TO RIDES, RALLIES AND OTHER EVENTS ALL OVER THE WORLD — MORE THAN 20,000 EACH YEAR. A ONE-YEAR MEMBERSHIP IS FREE WITH THE PURCHASE OF YOUR MOTORCYCLE. THE PARTY IS ALWAYS ROLLING. LET'S RIDE.





TOURING

THERE'S A WIDE-OPEN WORLD TO EXPERIENCE OUT THERE. WE'VE BEEN BUILDING THE MOTORCYCLES TO HELP YOU DISCOVER IT IN THE MOST EPIC WAY POSSIBLE SINCE WE INVENTED THE FULLY DRESSED TOURING MACHINE IN THE 1960s. ENTIRE CONTINENTS AND ALL THE MOUNTAIN RANGES, CANYONS, GLACIERS, SMALL TOWNS, DESERTS, CITIES, ROADSIDE ATTRACTIONS, ADVENTURES, AND STORIES THEY CONTAIN ARE YOURS FOR THE TAKING IN THE SADDLE OF A HARLEY-DAVIDSON® TOURING MACHINE. NO ONE BUILDS THEM BETTER.



NOW WITH 114 CUBIC INCHES OF TRAFFIC-PASSING, HORIZON-CHASING POWER.

THERE'S BIG NEWS FOR TOURING RIDERS THIS YEAR. AND BY BIG, WE'RE TALKING ABOUT THE DISPLACEMENT OF THE 114-CUBIC-INCH MILWAUKEE-EIGHT® ENGINE THAT COMES IN THE ULTRA LIMITED, ULTRA LIMITED LOW, ROAD GLIDE® ULTRA, ROAD GLIDE® SPECIAL, STREET GLIDE® SPECIAL AND ROAD KING® SPECIAL MODELS THIS YEAR. IT GIVES YOU UP TO 123 FT. LBS. OF PEAK TORQUE, DEPENDING ON MODEL. THAT'S A SIGNIFICANT INCREASE OVER THE MILWAUKEE-EIGHT® 107 ENGINE. AND THAT MEANS QUICKER 0-TO-60 ACCELERATION, QUICKER 60-TO-80 FIFTH-GEAR ROLL ON. IN THE REAL WORLD, THAT GIVES YOU MORE ON-RAMP POWER TO GAIN SPEED AND MERGE WITH FREEWAY TRAFFIC, MORE POWER TO PULL AWAY FROM TRAFFIC, AND FASTER PASSING. YOU GET ALL THAT AND THE PRIDE THAT COMES FROM THE MOST DISPLACEMENT IN STANDARD H-D® TOURING MODELS.



EVEN THE INFOTAINMENT SYSTEM IS FASTER, SLEEKER AND MORE JAW-DROPPING.

WELCOME TO THE NEXT GENERATION OF HARLEY-DAVIDSON® INFOTAINMENT: THE BOOM!™ BOX GTS. THE FIRST THING YOU NOTICE IS THAT IT HAS NO BUTTONS. IT'S GLASS FROM EDGE TO EDGE WITH THE SLEEK APPEARANCE OF THE LATEST TOUCHSCREEN, AUTOMOTIVE AND MARINE DISPLAYS. BUT THERE'S EVEN MORE BEAUTY IN THE WAY IT WORKS. COMPARED TO THE PREVIOUS-GENERATION INFOTAINMENT SYSTEM, IT CUTS START-UP TIME IN HALF. TIME TO FM AUDIO IS LESS THAN 6 SECONDS. AND ROUTE CALCULATION TIME IS REDUCED FROM 10 SECONDS TO 2.5 SECONDS. OPERATION IS SIMPLE. THREE KEY SYSTEM BUTTONS: NAVIGATION, PHONE AND MUSIC. AND THERE'S A NEW BACK BUTTON ADDED TO THE RIGHT-HAND CONTROLS. A NEW QUICK-JUMP FEATURE ALLOWS EASY ACCESS TO NAV, AUDIO AND VEHICLE INFORMATION. STOP BY YOUR DEALER FOR A DEMONSTRATION. IT'S AS EASY AND INTUITIVE TO USE AS YOUR SMARTPHONE.



Corning® Gorilla® Glass, used on billions of mobile devices worldwide, is a durable and scratch-resistant cover glass. It includes an advanced surface treatment designed to minimize reflection and give you exceptional visibility in bright sunlight.

The Boom!™ Box GTS has excellent touch performance, even in wet conditions or with gloves.

The overall screen provides 100 percent more resolution for 4 times higher contrast than the previous display system.

User-selectable background colors and high-contrast viewing mode.

The entire system can be managed by your motorcycle hand controls. It can also be operated by voice command.

All screens feature condensed information that's easy to read and navigate.

Apple CarPlay® compatible.* You can get directions, make calls, send and receive messages and listen to music with a supported Apple iPhone® and an active wired or wireless headset.*

Allows you to choose alternate routes based on fastest, shortest, twisty and scenic nav features.

Upload routes created on the Harley-Davidson™ Ride Planner app from your smartphone or tablet through a wireless connection or the USB port.

The new BOOM!™ Box GTS comes standard on the Ultra Limited, Ultra Limited Low, Road Glide® Ultra, Road Glide® Special, Street Glide® Special and Tri Glide® Ultra models. It's available as a factory-installed option on the Street Glide®, Road Glide® and Ultra Classic® models.

*Your motorcycle must be equipped with an optional wired or wireless H-D® Genuine Motor Parts and Accessories headset and an iPhone® 5 or later to enable CarPlay®. Upgrade your 2019 Ultra Classic®, Street Glide®, and Road Glide® models from a Boom!™ Box Standard 4.3 Radio to the BOOM!™ Box GTS with Genuine Motor Parts and Accessories.



STREET GLIDE® SPECIAL / The 2019 Street Glide® Special model kicks the hot rod bagger style into a higher gear. It starts with the Milwaukee-Eight® 114 engine that comes standard this year. When you twist the throttle, hold on tight. You also get the all-new big-screen BOOM!™ GTS infotainment system. Then there's the look. Talon® wheels. Stretched bags. Blacked-out forks, handlebars, tank console and exhaust. Stop people in their tracks, and leave them in your dust.



STREET GLIDE® / The mold for the factory hot rod bagger was cut the day the Street Glide® motorcycle rolled off the line. It's spawned imitators, but none measure up. The look is backed up by the refined power of a Milwaukee-Eight® 107 engine. It combines with a fully adjustable rear suspension, responsive front end and Reflex™ linked Brembo® brakes for an unmatched ride. There's also an optional BOOM!™ GTS infotainment system. It just gets farther ahead of the pack.



ROAD GLIDE® SPECIAL / The Road Glide® Special model gets a blacked-out Milwaukee-Eight® 114 engine standard this year. Which means our darkest, most road-devouring road machine goes to an even darker, more road-hungry place. You get the all-new big-screen BOOM!™ GTS infotainment system, premium Talon® wheels, stretched bags, a painted inner fairing and plenty of attitude. Not to mention the ride of a modern Harley® touring machine. It's good news for serious mile eaters.



ROAD GLIDE® / The menacing dual Daymaker® Reflector LED headlamps in the Road Glide® motorcycle's shark-nose fairing are a familiar sight on the highway. It's the machine of choice for hard-charging riders. You get Milwaukee-Eight® 107 power, easily adjustable emulsion rear shocks and responsive front suspension, and the confidence of Reflex™ linked Brembo® brakes. Crank the tunes on the optional BOOM!™ GTS infotainment system, and lay down some serious miles of your own.



ROAD KING® SPECIAL / If you want to know what ruling the road truly feels like, reach for the mini-ape handlebars on the Road King® Special and send some fuel to its new Milwaukee-Eight® 114 engine. This is top-of-the-line power and a look that will stop traffic. Blacked out, stripped down, rolling on turbine wheels. There are stretched bags and a black police-style headlight nacelle with a black trim ring. There's a dark side to our heritage. You're looking at the king of it.



ROAD KING® / The style of the Road King® motorcycle speaks of decades of love for the open road. Underneath, you have a machine from right now. The Hiawatha headlamp and nacelle were born in the '60s, but the power of the Milwaukee-Eight® 107 engine brings it all into right now, fast. The Showa® dual-bending valve front suspension and rear emulsion shocks put you in control for a plush ride. And you get cast aluminum Impeller wheels and one-touch bags. It's a modern classic.



FREEWHEELER® / The Freewheeler® is where stripped-down custom style meets the confidence of three wheels. You get all-new braking enhancements like cornering-enhanced Reflex™ linked brakes with ABS and traction control. Classic styling details like bobtail fenders, slash cut pipes, 12-inch mini-apes and Enforcer aluminum wheels. There's enough cargo space to hold two full-face helmets plus your extra gear. Power is plentiful, thanks to a Milwaukee-Eight™ 114 V-Twin engine. Dual bending valve 49mm front forks and easily adjustable rear suspension make the ride smooth.



TRI GLIDE® ULTRA / It gets better than ever on the Tri Glide® Ultra this year. Because now you've got the confidence that comes from all-new traction control. It sends power where you need it to help maintain control. You also get Milwaukee-Eight™ 114 power, Reflex™ linked brakes with ABS, an all-new 4-speaker BOOM!™ GTS infotainment system, electronic cruise control and 6.8 cubic feet of storage space. So you can pack enough to go for a good long time.



ULTRA LIMITED / From its new Twin-Cooled™ Milwaukee-Eight™ 114 V-Twin engine right down to its heated hand grips, the Ultra Limited has it all. Batwing fairing and splitstream air vent for optimal air flow and reduced head buffeting. All-new BOOM!™ GTS infotainment system. Electronic cruise control, Reflex™ linked Brembo® brakes with ABS, responsive front and rear suspension, and a Tour-Pak® carrier with room for two full-face helmets. And plenty more. Yes, you can have it all.

ULTRA LIMITED LOW / You don't have to be big in stature to ride a machine that's big on touring features. The Ultra Limited Low model offers a lowered front and rear suspension, giving it the lowest seat height in H-D® touring — just 26.5 inches off the ground. There's also an extended-reach side stand and smaller diameter grips. It's all within your reach.



ROAD GLIDE® ULTRA / The Road Glide® Ultra is the choice of the highest-mileage riders in the Harley-Davidson family. For good reason. You get a frame-mounted shark-nose fairing, a 13.5-inch windscreen and dual Daymaker® Reflector LED headlamps. And the power of a Twin-Cooled™ Milwaukee-Eight® 114 V-Twin engine. Add the responsive frame and suspension, Reflex™ linked Brembo® brakes, a roomy Tour-Pak® carrier, an all-new BOOM!™ Box GTS infotainment system, and all the rest. It's ready for all road warriors.



ELECTRA GLIDE® ULTRA CLASSIC® / For those who want the essential touring machine, one name rises above all the rest. The Electra Glide® Ultra Classic® model. Classic style meets the passing power of the Milwaukee-Eight® 107 engine, a responsive front and rear suspension, Reflex™ linked Brembo® brakes with ABS, and a powerful LED headlight with spot lamps. Comfort is unsurpassed, thanks to a two-up seat with a deep bucket and a luxurious passenger-area with back and arm rests. Happy horizon hunting.

CUSTOMIZATION. THE MOST REWARDING JOURNEY OF ALL.



Road King® Special

GENUINE MOTOR PARTS AND ACCESSORIES FOR TOURING MODELS

A HARLEY-DAVIDSON® TOURING BIKE IS JUST GETTING STARTED WHEN IT ROLLS OUT OF THE FACTORY. BECAUSE THAT'S THE BEGINNING OF THE JOURNEY YOU TAKE TO MAKE IT COMPLETELY YOURS. WITH GENUINE MOTOR PARTS AND ACCESSORIES, YOU CAN ADD YOUR OWN CUSTOM STYLING TOUCHES. YOU CAN ADD COMFORT FEATURES THAT HELP YOU RIDE FURTHER. AND YOU CAN CRANK UP THE TORQUE AND HORSEPOWER WITH PERFORMANCE UPGRADES THAT WILL MAINTAIN THE RICH SOUND OF YOUR V-TWIN AND YOUR WARRANTY*. IT ALL STARTS AT YOUR HARLEY-DAVIDSON® DEALER. ENJOY THE RIDE.

*Genuine H-D® Parts and Accessories must be installed by an authorized dealer to maintain warranty.
Handlebar height is regulated in many locations. Check local laws to ensure your motorcycle meets applicable regulations.



Road Glide® Special



Street Glide®



Freewheeler®



CVO™ LIMITED / The CVO™ Limited model brings an unparalleled level of class to the Grand American Touring class. It starts with the massive power of the Twin-Cooled™ Milwaukee-Eight® 117 V-Twin engine and just keeps rolling from there. The paint is showstopping. You get 19-inch front and 18-inch rear Tomahawk wheels. Kahuna Collection shifter pegs, a brake pedal cover and muffler end caps. Heated grips and rider and passenger boards.

Blazed red rocker covers. Satin chrome exhaust. Of course, it features BOOM!™ Box GTS infotainment with wireless interface and premium sound system. There's an LED bezel on the Tour-Pak® carrier, LED turn signals and LED lighting surround. You also get a custom seat cover and stitching you can't get anywhere else. The list goes on. Is this too much motorcycle for everyone? No. That's the whole point. 2019 Colors: Auburn Sunglo/Black Hole with Rich Bourbon, Magnetic Gray/Wineberry with Red Pepper, Magnetic Gray Fade.



CVO™ STREET GLIDE® / There's the best, and there's all the rest. When it comes to custom touring, the CVO™ Street Glide® model is as far up the ladder as you can go. You get the power of the Milwaukee-Eight® 117 V-Twin engine; red rocker covers; premium custom paint; premium Talon® wheels and custom controls; and an all-new BOOM!™ Box GTS infotainment with 3 separate amplifiers, 75 watts per channel and 900 watts of clear audio performance. There's a wireless headset interface that lets you use your Bluetooth® headset to communicate with your infotainment system, passenger and other riders. The list also includes heated grips. We cut no corners and took no shortcuts. In true CVO™ style, we sweat every detail and then polish it like a jewel. Because some people want to roll bigger. 2019 Colors: Charred Steel/Lightning Silver, Black Forest/Wineberry, Black Forest.



CVO™ ROAD GLIDE® / For those who want to cut the widest swath possible, we're proud to offer the CVO™ Road Glide.® From the tip of its shark-nose fairing and Fang® spoiler to its LED taillight, this machine is loaded with the kind of custom details that will turn heads and drop jaws wherever it goes. You get Milwaukee-Eight® 117 power. Red rocker covers with a new Heavy Breather intake. A premium BOOM!™ Box GTS infotainment system with wireless interface, 2 amplifiers, 600 watts of clear audio performance, and bi-amp speakers in the front fairing and saddlebag lids. Paint that will put high-end, one-off custom jobs to shame. And premium 21-inch front and 18-inch rear wheels. Everywhere your eyes rest, you'll find a custom detail. We took this machine as far as it goes. Now it's your turn. 2019 Colors: Lightning Silver/Charred Steel with Black Hole, Red Pepper/Magnetic Gray with Black Hole, Mako Shark Fade.



**ONCE YOU'VE BROKEN OUT,
THEY CAN'T PUT YOU BACK IN.**

THERE'S A POINT IN EVERY RIDE WHERE YOU HIT THE GROOVE, AND SUDDENLY EVERYTHING JUST FEELS RIGHT. YOU CAN FEEL THE POWER OF THE HARLEY-DAVIDSON® V-TWIN ENGINE PUTTING THE WORLD'S B.S. FARTHER BEHIND YOU WITH EVERY HIGHWAY STRIPE THAT FLASHES BY. ONCE YOU START THIS JOURNEY, THERE'S NO END TO HOW FAR IT CAN TAKE YOU. AND THE MORE YOU PUT INTO IT, THE MORE IT GIVES BACK TO YOU. VISIT YOUR LOCAL HARLEY-DAVIDSON® DEALER AND TAKE A RIDE. YOU WON'T COME BACK THE SAME.

FXDR™ 114

FXDRS



DIMENSIONS	Length (in/mm)	95.1 (2,416)
	Seat Height, Laden (in/mm) ¹	27.7 (704)
	Wheelbase (in/mm)	68.4 (1,738)
	Fuel Capacity (U.S. gals/liters)	4.4 (16.7)
	Weight, As Shipped (lbs/kg)	637 (289)
	Weight, In Running Order (lbs/kg)	668 (303)
POWERTRAIN	Engine	Milwaukee-Eight® 114
	Displacement (ci/cc)	114 (1,868)
	Fuel Economy (combined city/hwy) ²	46 mpg (5.1 V/100 km)
	Transmission	6-Speed Cruise Drive®
	ABS Option	Standard
	H-D® Factory Security System ³	Standard

SOLID: Vivid Black • Black Denim • Industrial Gray Denim • Wicked Red Denim • Bonneville Salt Denim • Rawhide Denim

PRICING (MSRP) ⁴	MSRP Vivid Black	\$21,349
	Color Option	\$21,749
	Two-Tone Option ³	N/A
	Custom Option	N/A
	Custom Two-Tone Option ³	N/A
	ABS Option	Standard
COLOR OPTIONS ⁵	H-D® Factory Security System ³	Standard
	Cruise Control	N/A
	Premium Radio Option	N/A
	California Emissions	\$200
	Freight ⁶	\$390

SPORT GLIDE™

FLSB



DIMENSIONS	Length (in/mm)	91.7 (2,330)
	Seat Height, Laden (in/mm) ¹	25.7 (653)
	Wheelbase (in/mm)	64 (1,625)
	Fuel Capacity (U.S. gals/liters)	5 (18.9)
	Weight, As Shipped (lbs/kg)	670 (304)
	Weight, In Running Order (lbs/kg)	699 (317)
POWERTRAIN	Engine	Milwaukee-Eight® 107
	Displacement (ci/cc)	107 (1,746)
	Fuel Economy (combined city/hwy) ²	47 mpg (5 V/100 km)
	Transmission	6-Speed Cruise Drive®
	ABS Option	Standard
	H-D® Factory Security System ³	Standard

SOLID: Vivid Black • Wicked Red • Twisted Cherry • Midnight Blue • Barracuda Silver

CUSTOM: Kinetic Green • Scorched Orange/Black Denim

PRICING (MSRP) ⁴	MSRP Vivid Black	\$18,649
	Color Option	\$19,049
	Two-Tone Option ³	N/A
	Custom Option	\$19,599
	Custom Two-Tone Option ³	\$19,799
	ABS Option	Standard
COLOR OPTIONS ⁵	H-D® Factory Security System ³	Standard
	Cruise Control	Standard
	Premium Radio Option	N/A
	California Emissions	\$200
	Freight ⁶	\$390

HERITAGE CLASSIC

FLHC 107
FLHCS 114



DIMENSIONS	Length (in/mm)	95.1 (2,415)
	Seat Height, Laden (in/mm) ¹	26.3 (668)
	Wheelbase (in/mm)	64.2 (1,630)
	Fuel Capacity (U.S. gals/liters)	5 (18.9)
	Weight, As Shipped (lbs/kg)	697 (316)
	Weight, In Running Order (lbs/kg)	107 - 723 (328) 728 (330)
POWERTRAIN	Engine	Milwaukee-Eight® 107
	Displacement (ci/cc)	107 (1,746)
	Engine	Milwaukee-Eight® 114
	Displacement (ci/cc)	114 (1,868)
	Fuel Economy (combined city/hwy) ²	47 mpg (5 V/100 km)
	Transmission	6-Speed Cruise Drive®

SOLID: Vivid Black • Rawhide

TWO-TONE: Wicked Red/Twisted Cherry • Billiard Blue/Billiard White • Rawhide/Vivid Black (114 only)

CUSTOM: Kinetic Green (114 only) • Silver Flux/Black Fuse (114 only)

PRICING (MSRP) ⁴	MSRP Vivid Black	107 - \$19,049 114 - \$20,449
	Color Option	107 - \$19,449 114 - \$20,849
	Two-Tone Option ³	107 - \$19,799 114 - \$21,199
	Custom Option	107 - N/A 114 - \$21,399
	Custom Two-Tone Option ³	107 - N/A 114 - \$21,599
	ABS Option	Standard
COLOR OPTIONS ⁵	H-D® Factory Security System ³	Standard
	Cruise Control	Standard
	Premium Radio Option	N/A
	California Emissions	\$200
	Freight ⁶	\$390

BREAKOUT®

FXBR 107
FXBRS 114



DIMENSIONS	Length (in/mm)	93.3 (2,370)
	Seat Height, Laden (in/mm) ¹	25.6 (650)
	Wheelbase (in/mm)	66.7 (1,695)
	Fuel Capacity (U.S. gals/liters)	3.5 (13.2)
	Weight, As Shipped (lbs/kg)	648 (294)
	Weight, In Running Order (lbs/kg)	672 (305)
POWERTRAIN	Engine	Milwaukee-Eight® 107
	Displacement (ci/cc)	107 (1,746)
	Engine	Milwaukee-Eight® 114
	Displacement (ci/cc)	114 (1,868)
	Fuel Economy (combined city/hwy) ²	47 mpg (5 V/100 km)
	Transmission	6-Speed Cruise Drive®

SOLID: Vivid Black • Industrial Gray • Wicked Red • Bonneville Salt Pearl • Rawhide Denim

CUSTOM: Blue Max (114 only) • Scorched Orange/Black Denim (114 only)

PRICING (MSRP) ⁴	MSRP Vivid Black	107 - \$19,049 114 - \$20,449
	Color Option	107 - \$19,449 114 - \$20,849
	Two-Tone Option ³	N/A
	Custom Option	107 - N/A 114 - \$21,399
	Custom Two-Tone Option ³	107 - N/A 114 - \$21,599
	ABS Option	Standard
COLOR OPTIONS ⁵	H-D® Factory Security System ³	Standard
	Cruise Control	N/A
	Premium Radio Option	N/A
	California Emissions	\$200
	Freight ⁶	\$390

LOW RIDER®

FXLR



DIMENSIONS	Length (in/mm)	92.7 (2,355)
	Seat Height, Laden (in/mm) ¹	26.2 (665)
	Wheelbase (in/mm)	64.2 (1,630)
	Fuel Capacity (U.S. gals/liters)	5 (18.9)
	Weight, As Shipped (lbs/kg)	633 (287)
	Weight, In Running Order (lbs/kg)	661 (300)
POWERTRAIN	Engine	Milwaukee-Eight® 107
	Displacement (ci/cc)	107 (1,746)
	Fuel Economy (combined city/hwy) ²	47 mpg (5 V/100 km)
	Transmission	6-Speed Cruise Drive®
	ABS Option	N/A
	H-D® Factory Security System ³	Standard

SOLID: Vivid Black • Twisted Cherry • Midnight Blue • Barracuda Silver

PRICING (MSRP) ⁴	MSRP Vivid Black	\$15,049
	Color Option	\$15,449
	Two-Tone Option ³	N/A
	Custom Option	N/A
	Custom Two-Tone Option ³	N/A
	ABS Option	\$795
COLOR OPTIONS ⁵	H-D® Factory Security System ³	Standard
	Cruise Control	N/A
	Premium Radio Option	N/A
	California Emissions	\$200
	Freight ⁶	\$390

DELUXE

FLDE



DIMENSIONS	Length (in/mm)	95.1 (2,415)
	Seat Height, Laden (in/mm) ¹	25.9 (658)
	Wheelbase (in/mm)	64.2 (1,630)
	Fuel Capacity (U.S. gals/liters)	5 (18.9)
	Weight, As Shipped (lbs/kg)	668 (303)
	Weight, In Running Order (lbs/kg)	697 (316)
POWERTRAIN	Engine	Milwaukee-Eight® 107
	Displacement (ci/cc)	107 (1,746)
	Fuel Economy (combined city/hwy) ²	47 mpg (5 V/100 km)
	Transmission	6-Speed Cruise Drive®
	ABS Option	N/A
	H-D® Factory Security System ³	N/A

SOLID: Vivid Black • Rawhide

TWO-TONE: Wicked Red/Twisted Cherry • Midnight Blue/Barracuda Silver

CUSTOM: Scorched Orange/Black Denim

PRICING (MSRP) ⁴	MSRP Vivid Black	\$18,049
	Color Option	\$18,449
	Two-Tone Option ³	\$18,799
	Custom Option	N/A
	Custom Two-Tone Option ³	\$19,199
	ABS Option	Standard
COLOR OPTIONS ⁵	H-D® Factory Security System ³	Standard
	Cruise Control	N/A
	Premium Radio Option	N/A
	California Emissions	\$200
	Freight ⁶	\$390

SOFTAIL SLIM®

FLSL



DIMENSIONS	Length (in/mm)	90.9 (2,310)
	Seat Height, Laden (in/mm) ¹	25.5 (648)
	Wheelbase (in/mm)	64.2 (1,630)
	Fuel Capacity (U.S. gals/liters)	5 (18.9)
	Weight, As Shipped (lbs/kg)	642 (291)
	Weight, In Running Order (lbs/kg)	671 (304)
POWERTRAIN	Engine	Milwaukee-Eight® 107
	Displacement (ci/cc)	107 (1,746)
	Fuel Economy (combined city/hwy) ²	47 mpg (5 V/100 km)
	Transmission	6-Speed Cruise Drive®
	ABS Option	\$795
	H-D® Factory Security System ³	Standard

SOLID: Vivid Black • Black Denim • Industrial Gray • Wicked Red Denim • Bonneville Salt Denim
Billiard Blue • Rugged Gold Denim

PRICING (MSRP) ⁴	MSRP Vivid Black	\$15,949
	Color Option	\$16,349
	Two-Tone Option ³	N/A
	Custom Option	N/A
	Custom Two-Tone Option ³	N/A
	ABS Option	\$795
COLOR OPTIONS ⁵	H-D® Factory Security System ³	Standard
	Cruise Control	N/A
	Premium Radio Option	N/A
	California Emissions	\$200
	Freight ⁶	\$390

DIMENSIONS	Length (in/mm)	93.3 (2,370)
	Seat Height, Laden (in/mm) ¹	25.9 (658)
	Wheelbase (in/mm)	65.6 (1,665)
	Fuel Capacity (U.S. gals/liters)	5 (18.9)
	Weight, As Shipped (lbs/kg)	107 - 670 (304) 114 - 671 (304)
	Weight, In Running Order (lbs/kg)	699 (317)
POWERTRAIN	Engine	Milwaukee-Eight® 107
	Displacement (ci/cc)	107 (1,746)
	Engine	Milwaukee-Eight® 114
	Displacement (ci/cc)	114 (1,868)
	Fuel Economy (combined city/hwy) ²	47 mpg (5 V/100 km)
	Transmission	6-Speed Cruise Drive®

SOLID: Vivid Black • Industrial Gray Denim • Wicked Red • Midnight Blue (114 only) • Rawhide (114 only)

TWO-TONE: Industrial Gray Denim/Black Denim

CUSTOM: Blue Max (114 only) • Scorched Orange/Black Denim (114 only)

DIMENSIONS	Length (in/mm)	92.1 (2,340)
	Seat Height, Laden (in/mm) ¹	27.7 (704)
	Wheelbase (in/mm)	63.6 (1,615)
	Fuel Capacity (U.S. gals/liters)	3.6 (13.6)
	Weight, As Shipped (lbs/kg)	653 (296)
	Weight, In Running Order (lbs/kg)	107 - 673 (305) 114 - 676 (306)
POWERTRAIN	Engine	Milwaukee-Eight® 107
	Displacement (ci/cc)	107 (1,746)
	Engine	Milwaukee-Eight® 114
	Displacement (ci/cc)	114 (1,868)
	Fuel Economy (combined city/hwy) ²	47 mpg (5 V/100 km)
	Transmission	6-Speed Cruise Drive®

SOLID: Vivid Black • Black Denim • Bonneville Salt Denim • Wicked Red Denim (107 only)

Wicked Red (114 only) • Rawhide Denim (114 only)

CUSTOM: Scorched Orange/Black Denim (114 only)

DIMENSIONS	Length (in/mm)	91.3 (2,320)
	Seat Height, Laden (in/mm) ¹	25.8 (655)
	Wheelbase (in/mm)	64.2 (1,630)
	Fuel Capacity (U.S. gals/liters)	3.5 (13.2)
	Weight, As Shipped (lbs/kg)	630 (286)
	Weight, In Running Order (lbs/kg)	653 (296)
POWERTRAIN	Engine	Milwaukee-Eight® 107
	Displacement (ci/cc)	107 (1,746)
	Fuel Economy (combined city/hwy) ²	47 mpg (5 V/100 km)
	Transmission	6-Speed Cruise Drive®
	ABS Option	Standard
	H-D® Factory Security System ³	Standard

SOLID: Vivid Black • Industrial Gray Denim • Wicked Red Denim • Billiard Blue • Rugged Gold Denim

TWO-TONE: Wicked Red/Twisted Cherry

PRICING (MSRP) ⁴	MSRP Vivid Black	107 - \$19,049 114 - \$20,449
	Color Option	107 - \$19,449 114 - \$20,849
	Two-Tone Option ³	107 - \$19,799 114 - \$21,199
	Custom Option	107 - N/A 114 - \$21,399
	Custom Two-Tone Option ³	107 - N/A 114 - \$21,599
	ABS Option	Standard
COLOR OPTIONS ⁵	H-D® Factory Security System ³	Standard
	Cruise Control	N/A
	Premium Radio Option	N/A
	California Emissions	\$200
	Freight ⁶	\$390

PRICING (MSRP) ⁴	MSRP Vivid Black	107 - \$17,049 114 - \$18,849
	Color Option	107 - \$17,449 114 - \$19,249
	Two-Tone Option ³	N/A
	Custom Option	N/A
	Custom Two-Tone Option ³	107 - N/A 114 - \$19,999
	ABS Option	107 - \$795 114 - Standard
COLOR OPTIONS ⁵	H-D® Factory Security System ³	Standard
	Cruise Control	N/A
	Premium Radio Option	N/A
	California Emissions	\$200
	Freight ⁶	\$390

PRICING (MSRP) ⁴	MSRP Vivid Black	\$14,549
	Color Option	\$14,949
	Two-Tone Option ³	\$15,299
	Custom Option	N/A
	Custom Two-Tone Option ³	N/A
	ABS Option	\$795
COLOR OPTIONS ⁵	H-D® Factory Security System ³	Standard
	Cruise Control	N/A
	Premium Radio Option	N/A
	California Emissions	\$200
	Freight ⁶	\$390

FAT BOY®

FLFB 107
FLFBS 114



FAT BOB®

FXFB 107
FXFBS 114



STREET BOB®

FXBB



STREET™

STREET™ 500

XG500



STREET™ 750

XG750



STREET ROD®

XG750A



TOURING

ULTRA LIMITED LOW

FLHTKL



DIMENSIONS	Length (in/mm)	102.4 (2,600)
	Seat Height, Laden (in/mm) ¹	25.6 (652)
COLOR OPTIONS ³	Wheelbase (in/mm)	64 (1,625)
	Fuel Capacity (U.S. gals./liters)	6 (22.7)
POWERTRAIN	Weight, As Shipped (lbs/kg)	873 (396)
	Weight, In Running Order (lbs/kg)	908 (412)
INFOTAINMENT	SOLID:	Vivid Black
	TWO-TONE:	Wicked Red/Twisted Cherry
PRICING (MSRP) ⁴	Industrial Gray Denim/Black Denim	
	Midnight Blue/Barracuda Silver	
SCORCHED ORANGE/BLACK DENIM	Silver Flux/Black Fuse	

ROAD GLIDE® ULTRA

FLTRU



DIMENSIONS	Length (in/mm)	102.2 (2,595)
	Seat Height, Laden (in/mm) ¹	27.2 (690)
COLOR OPTIONS ³	Wheelbase (in/mm)	64 (1,625)
	Fuel Capacity (U.S. gals./liters)	6 (22.7)
POWERTRAIN	Weight, As Shipped (lbs/kg)	899 (408)
	Weight, In Running Order (lbs/kg)	937 (425)
INFOTAINMENT	SOLID:	Vivid Black • Twisted Cherry
	TWO-TONE:	Midnight Blue/Barracuda Silver
PRICING (MSRP) ⁴	Wicked Red/Barracuda Silver	
	Scorched Orange/Black Denim	
SCORCHED ORANGE/BLACK DENIM	Silver Flux/Black Fuse	

ELECTRA GLIDE® ULTRA CLASSIC™

FLHTCU



DIMENSIONS	Length (in/mm)	102.4 (2,600)
	Seat Height, Laden (in/mm) ¹	27.4 (696)
COLOR OPTIONS ³	Wheelbase (in/mm)	64 (1,625)
	Fuel Capacity (U.S. gals./liters)	6 (22.7)
POWERTRAIN	Weight, As Shipped (lbs/kg)	877 (398)
	Weight, In Running Order (lbs/kg)	904 (410)
INFOTAINMENT	SOLID:	Vivid Black • Twisted Cherry
	TWO-TONE:	Midnight Blue/Barracuda Silver
PRICING (MSRP) ⁴	Wicked Red/Barracuda Silver	
	Kinetic Green	
SCORCHED ORANGE/BLACK DENIM		

CVO™

CVO™ LIMITED

FLHTKSE



DIMENSIONS	Length (in/mm)	102.4 (2,600)
	Seat Height, Laden (in/mm) ¹	28 (711)
COLOR OPTIONS ³	Wheelbase (in/mm)	64 (1,625)
	Fuel Capacity (U.S. gals./liters)	6 (22.7)
POWERTRAIN	Weight, As Shipped (lbs/kg)	901 (410)
	Weight, In Running Order (lbs/kg)	939 (426)
INFOTAINMENT	CUSTOM:	Auburn Sunglo/Black Hole with Rich Bourbon
	Magnetic Gray/Wineberry with Red Pepper	
PRICING (MSRP) ⁴	Magnetic Gray Fade	

CVO™ STREET GLIDE®

FLHXSE



DIMENSIONS	Length (in/mm)	95.9 (2,435)
	Seat Height, Laden (in/mm) ¹	26.1 (663)
COLOR OPTIONS ³	Wheelbase (in/mm)	64 (1,625)
	Fuel Capacity (U.S. gals./liters)	6 (22.7)
POWERTRAIN	Weight, As Shipped (lbs/kg)	842 (382)
	Weight, In Running Order (lbs/kg)	877 (398)
INFOTAINMENT	CUSTOM:	Charred Steel/Lightning Silver
	Black Forest/Wineberry	
PRICING (MSRP) ⁴	Black Forest	

CVO™ ROAD GLIDE®

FLTRXSE



DIMENSIONS	Length (in/mm)	96.9 (2,460)
	Seat Height, Laden (in/mm) ¹	25.9 (658)
COLOR OPTIONS ³	Wheelbase (in/mm)	64 (1,625)
	Fuel Capacity (U.S. gals./liters)	6 (22.7)
POWERTRAIN	Weight, As Shipped (lbs/kg)	849 (385)
	Weight, In Running Order (lbs/kg)	884 (401)
INFOTAINMENT	CUSTOM:	Lightning Silver/Charred Steel with Black Hole
	Red Pepper/Magnetic Gray with Black Hole	
PRICING (MSRP) ⁴	Mako Shark Fade	

Engine	Twin-Cooled™ Milwaukee-Eight® 114
Displacement (ci/cc)	114 (1,868)
Fuel Economy (combined city/hwy) ⁵	43 mpg (5.5 l/100 km)
Transmission	6-Speed Cruise Drive®
MSRP Vivid Black	\$28,089
Color Option	\$28,689
Two-Tone Option ³	\$29,139
Custom Option	N/A
Custom Two-Tone Option ³	\$30,289
ABS Option	Standard
H-D® Factory Security System ³	Standard
Cruise Control	Standard
Premium Radio Option	Standard
California Emissions	\$200
Freight ⁶	\$435
Infotainment System	Boom!™ Box GTS
Type	Full Color TFT
Speaker Size	5.25 inch standard

Engine	Twin-Cooled™ Milwaukee-Eight® 114
Displacement (ci/cc)	114 (1,868)
Fuel Economy (combined city/hwy) ⁵	43 mpg (5.5 l/100 km)
Transmission	6-Speed Cruise Drive®
MSRP Vivid Black	\$27,689
Color Option	\$28,289
Two-Tone Option ³	\$28,789
Custom Option	N/A
Custom Two-Tone Option ³	\$29,889
ABS Option	Standard
H-D® Factory Security System ³	Standard
Cruise Control	Standard
Premium Radio Option	Standard
California Emissions	\$200
Freight ⁶	\$435
Infotainment System	Boom!™ Box GTS
Type	Full Color TFT
Speaker Size	5.25 inch standard

Engine	Milwaukee-Eight® 107
Displacement (ci/cc)	107 (1,746)
Fuel Economy (combined city/hwy) ⁵	43 mpg (5.5 l/100 km)
Transmission	6-Speed Cruise Drive®
MSRP Vivid Black	\$24,589
Color Option	\$25,189
Two-Tone Option ³	\$25,639
Custom Option	\$25,889
Custom Two-Tone Option ³	N/A
ABS Option	Standard
H-D® Factory Security System ³	Standard
Cruise Control	Standard
Premium Radio Option	\$895
California Emissions	\$200
Freight ⁶	\$435
Infotainment System	Boom!™ Box 4.3
Type	Color
Speaker Size	5.25 inch standard

Engine	Twin-Cooled™ Milwaukee-Eight® 117
Displacement (ci/cc)	117 (1,923)
Fuel Economy (combined city/hwy) ⁵	41 mpg (5.7 l/100 km)
Transmission	6-Speed Cruise Drive®
MSRP Vivid Black	N/A
Color Option	N/A
Two-Tone Option ³	N/A
Custom Option	\$43,889
Custom Two-Tone Option ³	N/A
ABS Option	Standard
H-D® Factory Security System ³	Standard
Cruise Control	Standard
Premium Radio Option	Standard
California Emissions	\$200
Freight ⁶	\$435
Infotainment System	Boom!™ Box GTS
Type	Full Color TFT
Speaker Size	Stage I

Engine	Milwaukee-Eight® 117
Displacement (ci/cc)	117 (1,923)
Fuel Economy (combined city/hwy) ⁵	41 mpg (5.7 l/100 km)
Transmission	6-Speed Cruise Drive®
MSRP Vivid Black	N/A
Color Option	N/A
Two-Tone Option ³	N/A
Custom Option	\$40,889
Custom Two-Tone Option ³	N/A
ABS Option	Standard
H-D® Factory Security System ³	Standard
Cruise Control	Standard
Premium Radio Option	Standard
California Emissions	\$200
Freight ⁶	\$435
Infotainment System	Boom!™ Box GTS
Type	Full Color TFT
Speaker Size	Stage II

Engine	Milwaukee-Eight® 117
Displacement (ci/cc)	117 (1,923)
Fuel Economy (combined city/hwy) ⁵	41 mpg (5.7 l/100 km)
Transmission	6-Speed Cruise Drive®
MSRP Vivid Black	N/A
Color Option	N/A
Two-Tone Option ³	N/A
Custom Option	\$42,339
Custom Two-Tone Option ³	N/A
ABS Option	Standard
H-D® Factory Security System ³	Standard
Cruise Control	Standard
Premium Radio Option	Standard
California Emissions	\$200
Freight ⁶	\$435
Infotainment System	Boom!™ Box GTS
Type	Full Color TFT
Speaker Size	Stage II

MSRP Vivid Black	\$28,089
Color Option	\$28,689
Two-Tone Option ³	\$29,139
Custom Option	N/A
Custom Two-Tone Option ³	\$30,289
ABS Option	Standard
H-D® Factory Security System ³	Standard
Cruise Control	Standard
Premium Radio Option	Standard
California Emissions	\$200
Freight ⁶	\$435

MSRP Vivid Black	\$27,689
Color Option	\$28,289
Two-Tone Option ³	\$28,789
Custom Option	N/A
Custom Two-Tone Option ³	\$29,889
ABS Option	Standard
H-D® Factory Security System ³	Standard
Cruise Control	Standard
Premium Radio Option	Standard
California Emissions	\$200
Freight ⁶	\$435

MSRP Vivid Black	\$24,589
Color Option	\$25,189
Two-Tone Option ³	\$25,639
Custom Option	\$25,889
Custom Two-Tone Option ³	N/A
ABS Option	Standard
H-D® Factory Security System ³	Standard
Cruise Control	Standard
Premium Radio Option	\$895
California Emissions	\$200
Freight ⁶	\$435

MSRP Vivid Black	N/A
Color Option	N/A
Two-Tone Option ³	N/A
Custom Option	\$43,889
Custom Two-Tone Option ³	N/A
ABS Option	Standard
H-D® Factory Security System ³	Standard
Cruise Control	Standard
Premium Radio Option	Standard
California Emissions	\$200
Freight ⁶	\$435

MSRP Vivid Black	N/A
Color Option	N/A
Two-Tone Option ³	N/A
Custom Option	\$40,889
Custom Two-Tone Option ³	N/A
ABS Option	Standard
H-D® Factory Security System ³	Standard
Cruise Control	Standard
Premium Radio Option	Standard
California Emissions	\$200
Freight ⁶	\$435

MSRP Vivid Black	N/A
Color Option	N/A
Two-Tone Option ³	N/A
Custom Option	\$42,339
Custom Two-Tone Option ³	N/A
ABS Option	Standard
H-D® Factory Security System ³	Standard
Cruise Control	Standard
Premium Radio Option	Standard
California Emissions	\$200
Freight ⁶	\$435

Length (in/mm)	103 (2,615)
Seat Height, Laden (in/mm) ¹	26.2 (665)
Wheelbase (in/mm)	65.7 (1,670)
Fuel Capacity (U.S. gals./liters)	6 (22.7)
Weight, As Shipped (lbs/kg)	1,085 (492)
Weight, In Running Order (lbs/kg)	1,118 (507)
MSRP Vivid Black	\$28,099
Color Option	\$28,599
Two-Tone Option ³	N/A
Custom Option	\$29,699
Custom Two-Tone Option ³	\$30,399
ABS Option	Standard
H-D® Factory Security System ³	Standard
Cruise Control	Standard
Premium Radio Option	N/A
California Emissions	\$200
Freight ⁶	\$856
Infotainment System	Boom!™ Box GTS
Type	Full Color TFT
Speaker Size	5.25 inch standard

Length (in/mm)	105.1 (2,670)
Seat Height, Laden (in/mm) ¹	27.1 (700)
Wheelbase (in/mm)	65.7 (1,670)
Fuel Capacity (U.S. gals./liters)	6 (22.7)
Weight, As Shipped (lbs/kg)	1,204 (546)
Weight, In Running Order (lbs/kg)	1,243 (564)
MSRP Vivid Black	\$36,099
Color Option	\$36,949
Two-Tone Option ³	\$37,449
Custom Option	\$37,849
Custom Two-Tone Option ³	\$38,499
ABS Option	Standard
H-D® Factory Security System ³	Standard
Cruise Control	Standard
Premium Radio Option	Standard
California Emissions	\$200
Freight ⁶	\$856
Infotainment System	Boom!™ Box GTS
Type	Full Color TFT
Speaker Size	5.25 inch standard

Length (in/mm)	105.1 (2,670)
Seat Height, Laden (in/mm) ¹	27.1 (700)
Wheelbase (in/mm)	65.7 (1,670)
Fuel Capacity (U.S. gals./liters)	6 (22.7)
Weight, As Shipped (lbs/kg)	1,204 (546)
Weight, In Running Order (lbs/kg)	1,243 (564)
MSRP Vivid Black	\$36,099
Color Option	\$36,949
Two-Tone Option ³	\$37,449
Custom Option	\$37,849
Custom Two-Tone Option ³	\$38,499
ABS Option	Standard
H-D® Factory Security System ³	Standard
Cruise Control	Standard
Premium Radio Option	Standard
California Emissions	\$200
Freight ⁶	\$856
Infotainment System	Boom!™ Box GTS
Type	Full Color TFT
Speaker Size	5.25 inch standard

MSRP Vivid Black	N/A
Color Option	N/A
Two-Tone Option ³	N/A
Custom Option	\$43,889
Custom Two-Tone Option ³	N/A
ABS Option	Standard
H-D® Factory Security System ³	Standard
Cruise Control	Standard
Premium Radio Option	Standard
California Emissions	\$200
Freight ⁶	\$435

MSRP Vivid Black	N/A
Color Option	N/A
Two-Tone Option ³	N/A
Custom Option	\$40,889
Custom Two-Tone Option ³	N/A
ABS Option	Standard
H-D® Factory Security System ³	Standard
Cruise Control	Standard
Premium Radio Option	Standard
California Emissions	\$200
Freight ⁶	\$435

MSRP Vivid Black	N/A
Color Option	N/A
Two-Tone Option ³	N/A
Custom Option	\$42,339
Custom Two-Tone Option ³	N/A
ABS Option	Standard
H-D® Factory Security System ³	Standard
Cruise Control	Standard
Premium Radio Option	Standard
California Emissions	\$200
Freight ⁶	\$435

Engine	Milwaukee-Eight® 114
Displacement (ci/cc)	114 (1,868)
Fuel Economy (combined city/hwy) ²	43 mpg (5.5 l/100 km)
Transmission	6-Speed Cruise Drive®
MSRP Vivid Black	\$28,099
Color Option	\$28,599
Two-Tone Option ³	N/A
Custom Option	\$29,699
Custom Two-Tone Option ³	\$30,399
ABS Option	Standard
H-D® Factory Security System ³	Standard
Cruise Control	Standard
Premium Radio Option	N/A
California Emissions	\$200
Freight ⁶	\$856
Infotainment System	Boom!™ Box GTS
Type	Full Color TFT
Speaker Size	5.25 inch standard

Engine	Twin-Cooled™ Milwaukee-Eight® 114
Displacement (ci/cc)	114 (1,868)
Fuel Economy (combined city/hwy) ²	42 mpg (5.6 l/100 km)
Transmission	6-Speed Cruise Drive®
MSRP Vivid Black	\$36,099
Color Option	\$36,949
Two-Tone Option ³	\$37,449
Custom Option	\$37,849
Custom Two-Tone Option ³	\$38,499
ABS Option	Standard
H-D® Factory Security System ³	Standard
Cruise Control	Standard
Premium Radio Option	Standard
California Emissions	\$200
Freight ⁶	\$856
Infotainment System	Boom!™ Box GTS
Type	Full Color TFT
Speaker Size	5.25 inch standard

Engine	Twin-Cooled™ Milwaukee-Eight® 114
Displacement (ci/cc)	114 (1,868)
Fuel Economy (combined city/hwy) ²	42 mpg (5.6 l/100 km)
Transmission	6-Speed Cruise Drive®
MSRP Vivid Black	\$36,099
Color Option	\$36,949
Two-Tone Option ³	\$37,449
Custom Option	\$37,849
Custom Two-Tone Option ³	\$38,499
ABS Option	Standard
H-D® Factory Security System ³	Standard
Cruise Control	Standard
Premium Radio Option	Standard
California Emissions	\$200
Freight ⁶	\$856
Infotainment System	Boom!™ Box GTS
Type	Full Color TFT
Speaker Size	5.25 inch standard

MSRP Vivid Black	N/A
Color Option	N/A
Two-Tone Option ³	N/A
Custom Option	\$43,889
Custom Two-Tone Option ³	N/A
ABS Option	Standard
H-D® Factory Security System ³	Standard
Cruise Control	Standard
Premium Radio Option	Standard
California Emissions	\$200
Freight ⁶	\$435

MSRP Vivid Black	N/A
Color Option	N/A
Two-Tone Option ³	N/A
Custom Option	\$40,889
Custom Two-Tone Option ³	N/A
ABS Option	Standard
H-D® Factory Security System ³	Standard
Cruise Control	Standard
Premium Radio Option	Standard
California Emissions	\$200
Freight ⁶	\$435

MSRP Vivid Black	N/A
Color Option	N/A
Two-Tone Option ³	N/A
Custom Option	\$42,339
Custom Two-Tone Option ³	N/A
ABS Option	Standard
H-D® Factory Security System ³	Standard
Cruise Control	Standard
Premium Radio Option	Standard